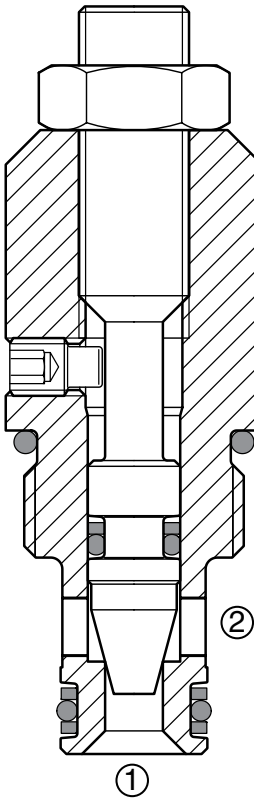
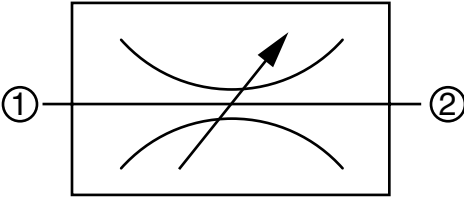


FLOW CONTROL VALVES

SD08-01

Needle, Poppet Type

Up to 16 gpm (60 l/min) • 6000 psi (420 bar)



Description

A screw-in cartridge, adjustable variable orifice, hydraulic flow restrictor valve, non-pressure compensated.

Operation

The SD08-01 controls flow in either direction from fully open to leaktight shut-off by turning the adjustment feature clock-wise. Flow is non-pressure compensated.

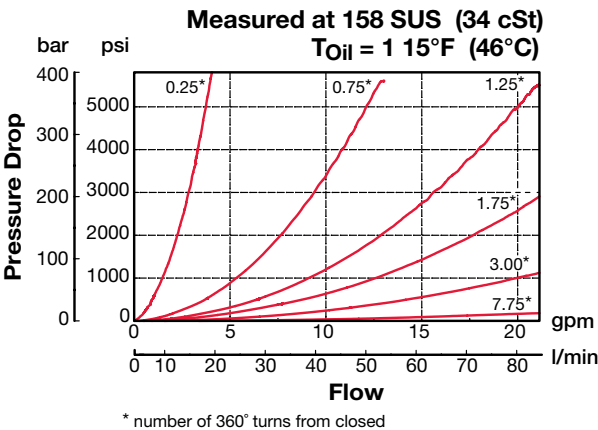
Features

- All external surfaces zinc plated
- Adjustment needle cannot be backed out of the valve
- Complete shut-off
- Desired setting may be locked down
- Hardened parts to ensure minimal wear and extend service life
- Aluminum knob option for ease of adjustment
- Industry common cavity

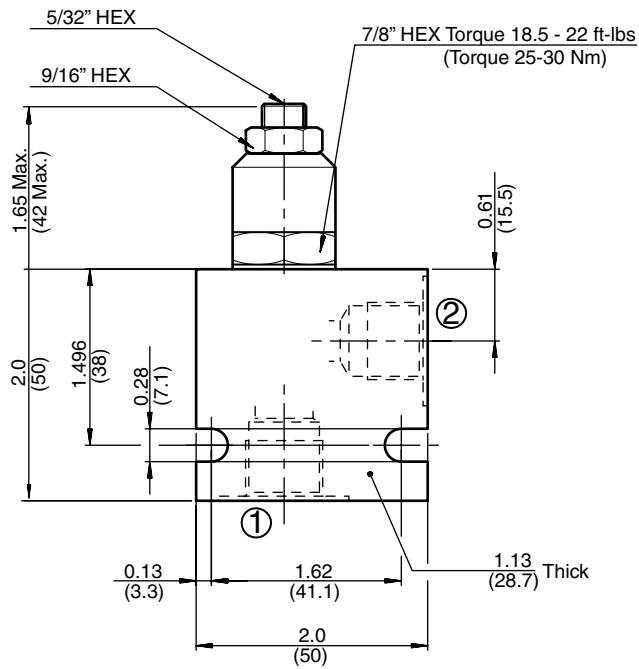
Specifications

Operating Pressure	6000 psi (420 bar)
Nominal Flow	16 gpm (60 l/min)
Adjustment Torque Required	1.25 lbf.ft at 3000 psi (1.7Nm at 210 bar) 2.21lbf.ft at 5000 psi (3.0 Nm at 350 bar)
Fluid Operating Temp. Range	-4° to 248°F (-20° to +120°C) (Consult factory for usage at temp. outside range.)
Fluid Compatibility	Mineral-based or synthetics with lubricating properties
Viscosity	50 to 2000 SUS (7.4 to 420 cSt)
Filtration	21/19/16 or cleaner (per ISO 4406). Use with filter rated $\beta_{10} \geq 200$.
Installation	No orientation restrictions
Cavity	FC08-2 (see Line Bodies & Cavities section)
Cavity Tools	Rougher: 02580090 Finisher: 02580091
Cartridge Weight	0.25 Lbs. (0.112 kg)
Cartridge Material	Steel with hardened work surfaces. Zinc-plated exposed surfaces. Anodized aluminum knobs. (option H) Buna N or Viton® o-rings, and PTFE back-up rings.
Seal Kits	Buna-N P/N: 03033920 Viton® P/N: 03051756

Performance



Dimensions



Model Code

SD08-01-C-N-V

Valve Model

Body & Ports

- C = No Line Body, cartridge only
- AS6 = SAE-6 ports, aluminum body
- SS6 = SAE-6 ports, steel body

Seals

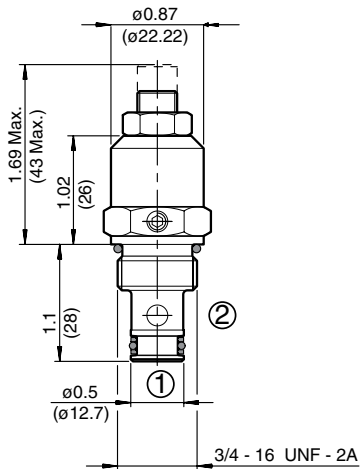
- N = Buna-N
- V = Viton®

Adjustment Options

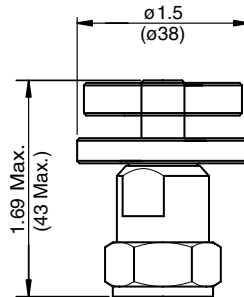
- H = Knurled Hand Knob
- K = Allen Head (HEX 5/32") w/ cover cap
- V = Allen Head (HEX 5/32")

Adjustment Options

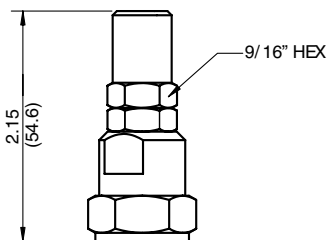
'V' - Allen Head (std)



'H' - Hand Knob



'K' - Protective Cap



All measurements in inches (mm).
Subject to technical modifications

Standard Line Bodies*

Code	Part No	Material	Pressure Rating	Weight
FH082-AS6	03011409	Aluminum, anodized	3500 psi (245 bar)	0.34 lb (0.15 kg)
FH082-SS6	00560917	Steel, Zinc plated	6000 psi (420 bar)	1.00 lb (0.45 kg)

*Please refer to Line Bodies & Cavities section for details